



# Organisationsstruktur

Geschäftsführender Vorstand

**Vorstandsvorsitzende(r)**

n.n.

Vorstand allgemeine  
Verwaltung

n.n.

Vorstand Finanzen

n.n.

Vorstand Presse  
und Schriftverkehr

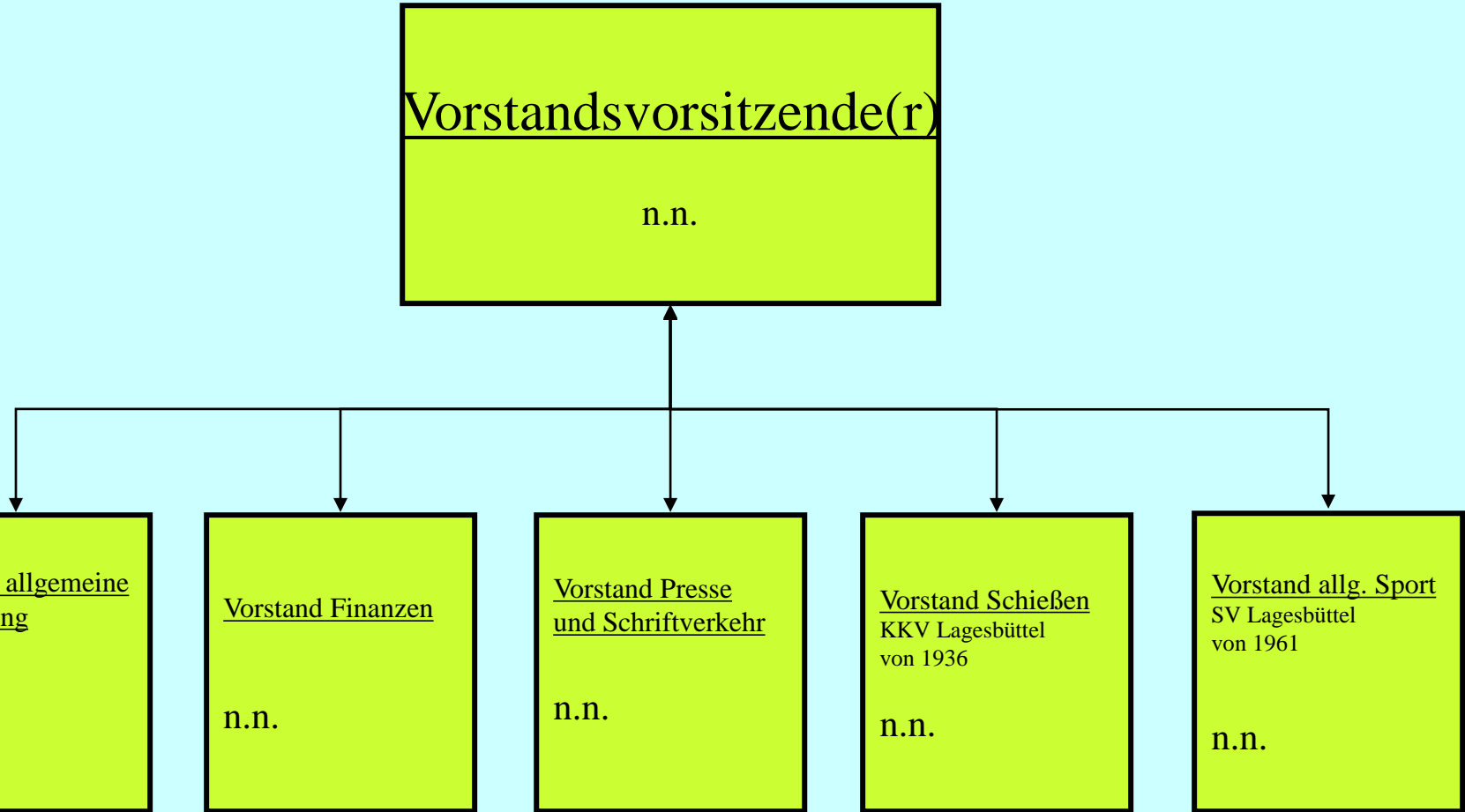
n.n.

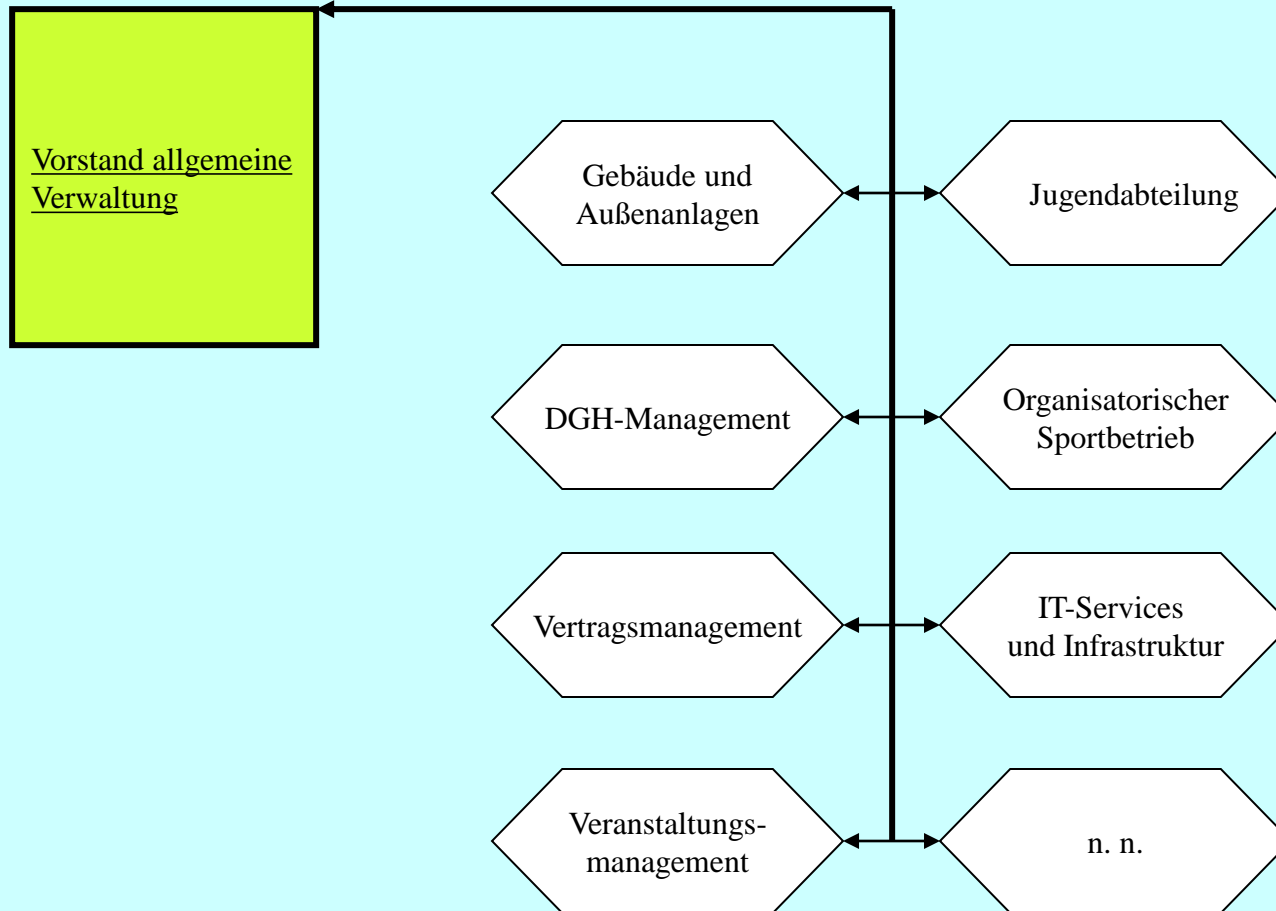
Vorstand Schießen  
KKV Lagesbüttel  
von 1936

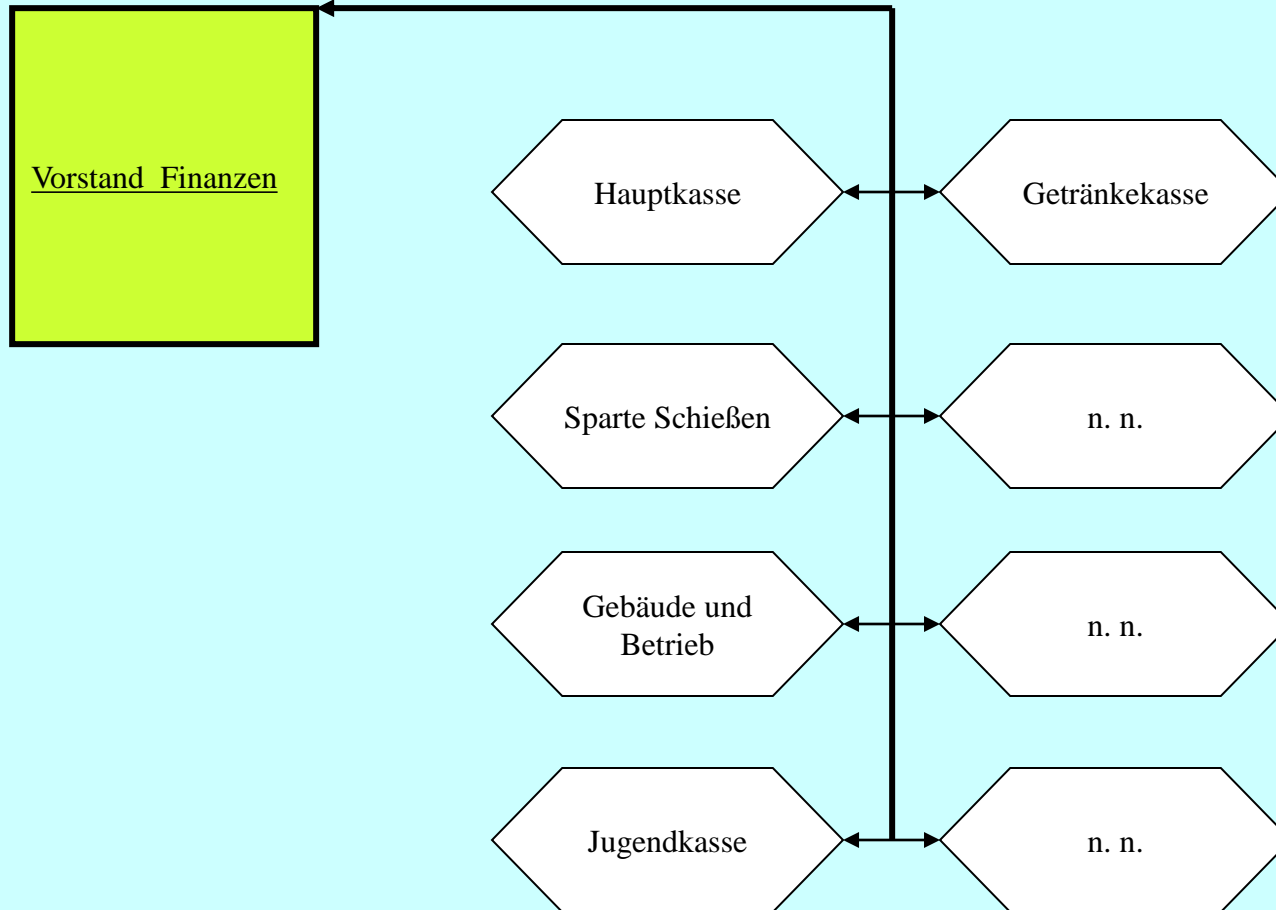
n.n.

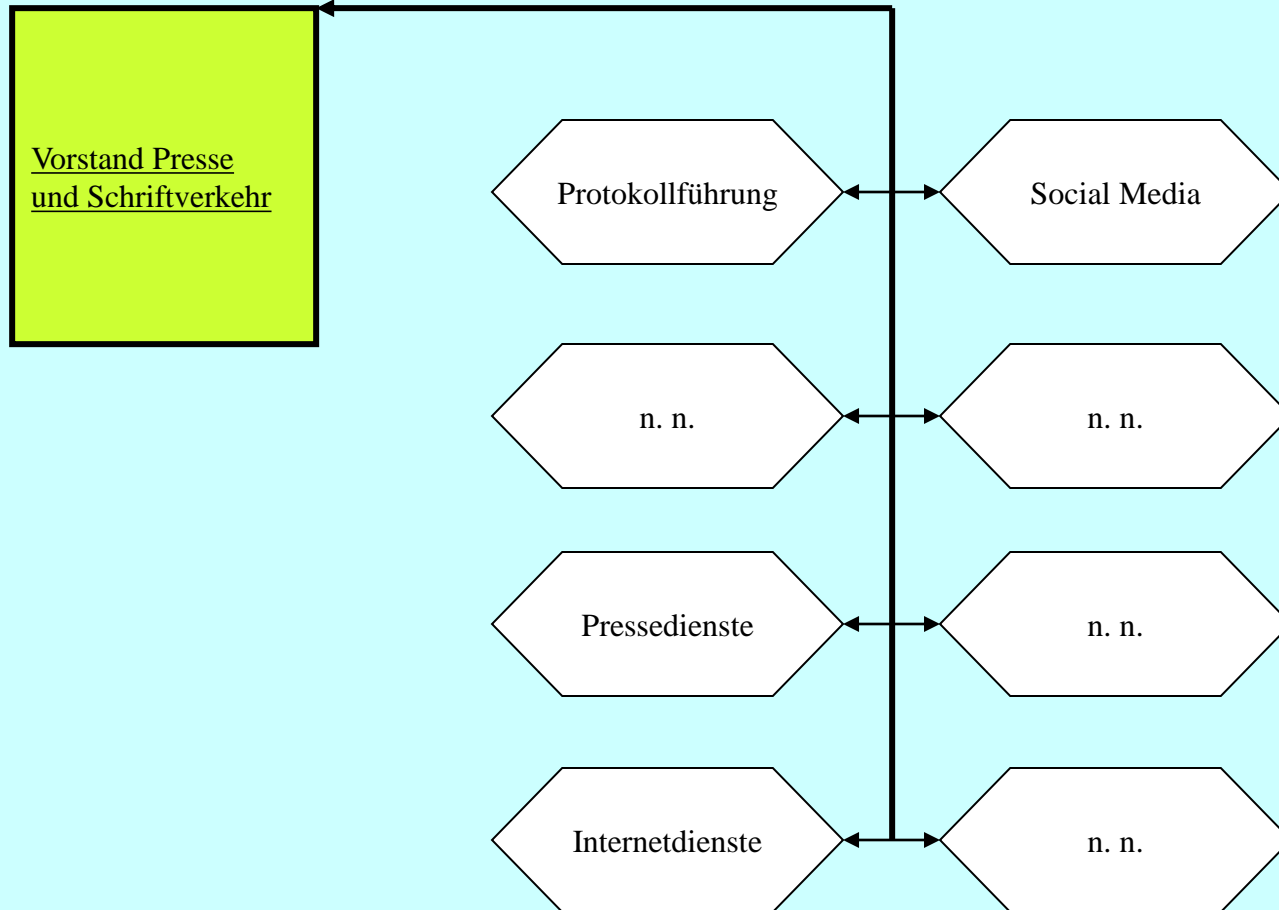
Vorstand allg. Sport  
SV Lagesbüttel  
von 1961

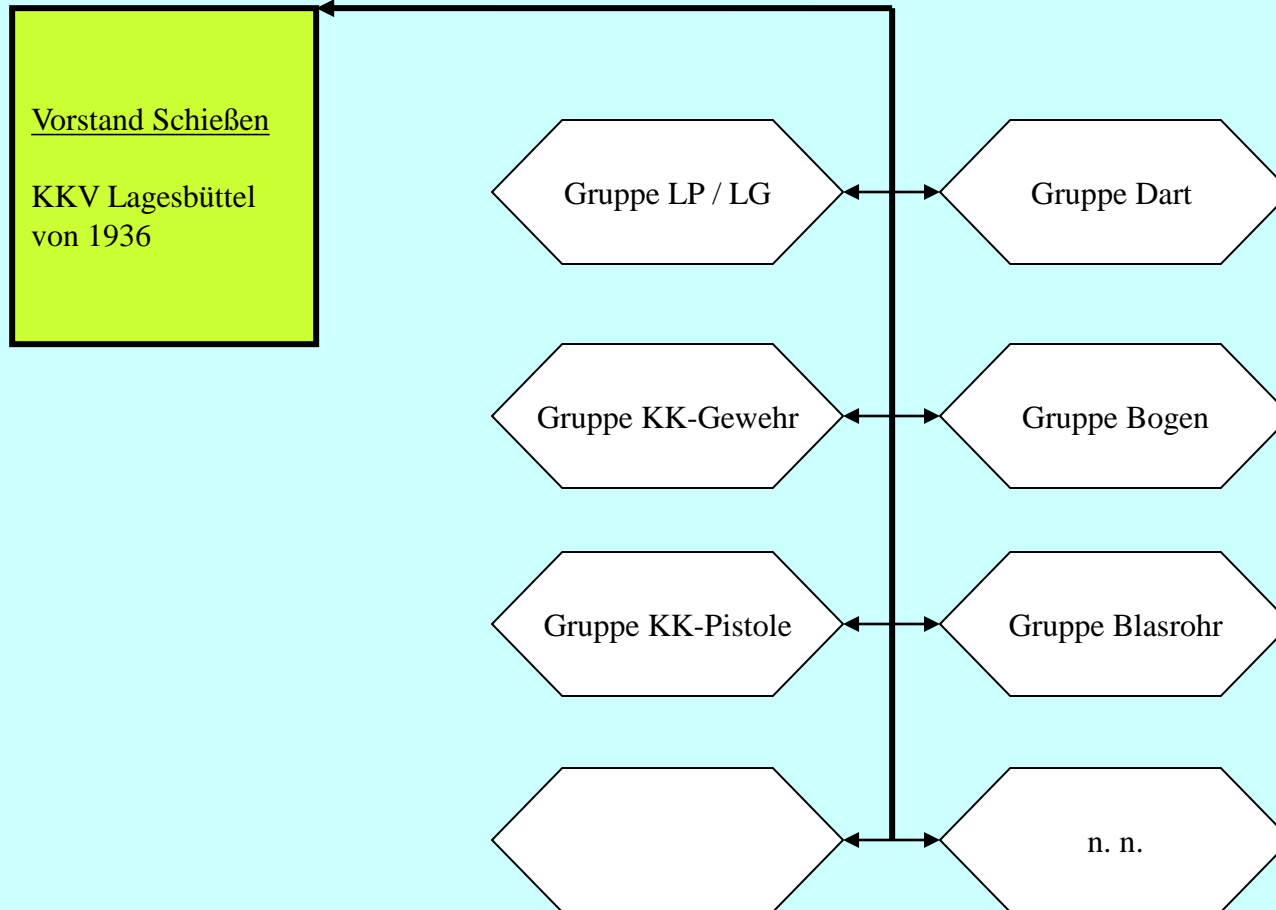
n.n.

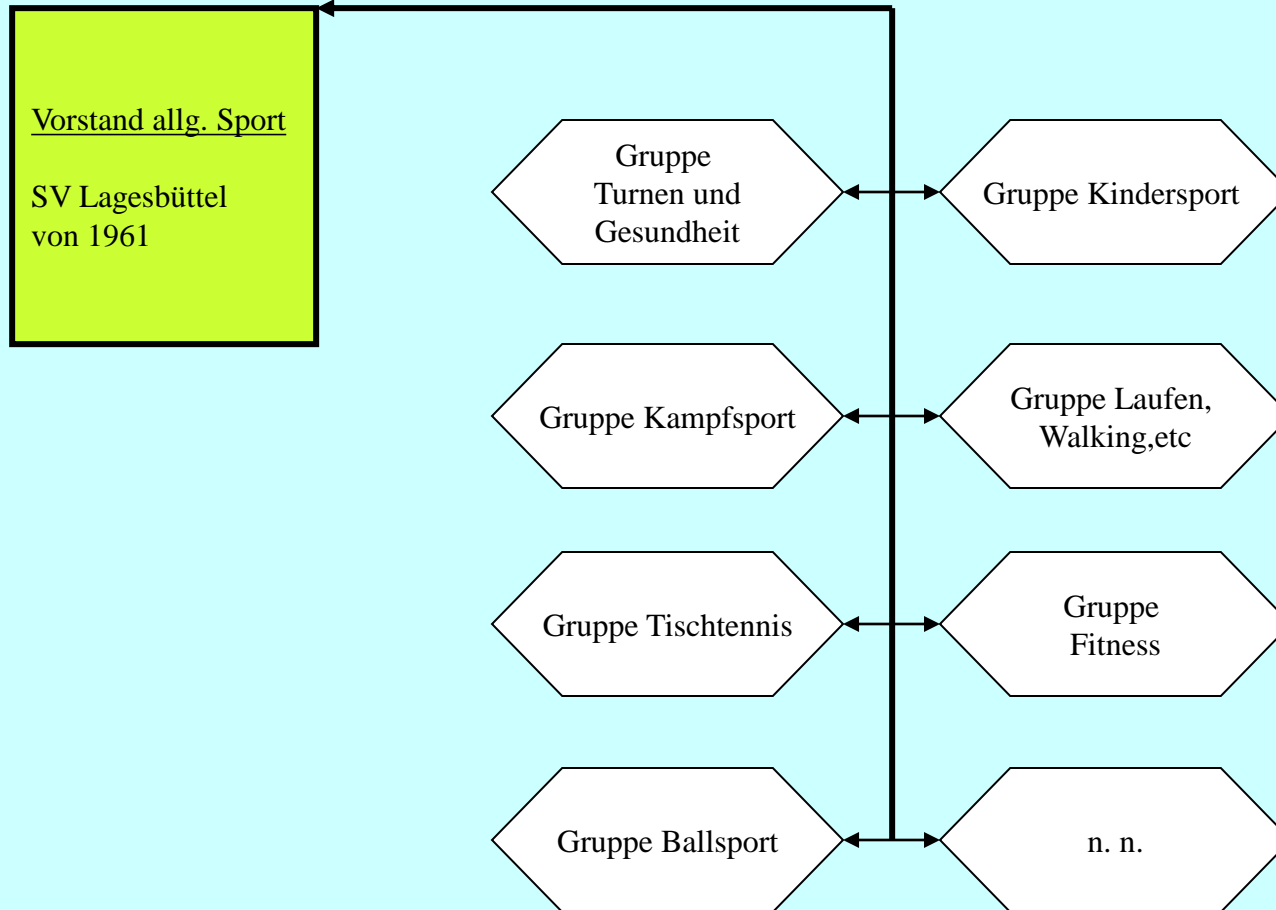












# Sportgemeinschaft – Lagesbüttel e. V.

Stand per 12.04.2003

Vorstand n. n.

